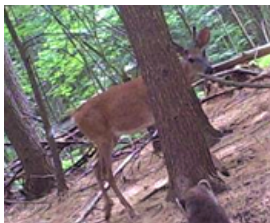




## FEATURED PHOTO GALLERY

We're thrilled to receive your watershed photos and stories, and we enjoy sharing them here in our Featured Photo Gallery. Like the photo above sent in by Tony Kvenvold of Harvard, MA. He took this picture of Barred Owls (can you see the second one to the right of the one in the foreground?) in his backyard. One was a parent owl teaching its youngster how to hunt for voles. According to Tony, they were very successful!

Feel free to send us a wildlife photo, a picture of a plant you couldn't identify, or snapshots of landscapes and interesting places in our watershed. And be sure to tell us a little bit about your picture. Submit your images and stories by email to [Wynne Treanor-Kvenvold](mailto:Wynne.Treanor-Kvenvold@nrwa.org), NRWA Communications Manager. Then visit our website frequently to see what's new!



### More Critter Cam Images from Townsend

We enjoyed the first images Helen Yetman-Bellows of Squirrel-Eze™ Friends Artisan Boutique in Townsend sent in from her critter cam, and we thought it would be great to share a few more.

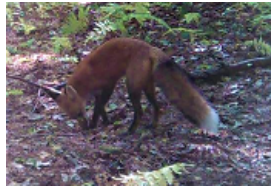
Thank you again Helen!





Helen Yetman-Bellows of Squirrel-Eze™ & Friends Artisan Boutique in Townsend decided to see who visits her woods. Here are some of the wildlife images that were captured on her critter cam.

Thank you for sharing these Helen!



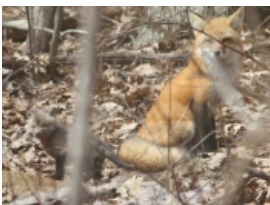
### **Bobcat by the Nashua River in Pepperell, MA**

This beautiful bobcat was spotted by Deb Taylor while she and Andy Padla were paddling their kayaks on the Nashua River in Pepperell. Clean water, protected greenway, and large areas of conservation land make it possible for large mammals, like the bobcat, to reside in our watershed. Photo from Andy Padla and Deb Taylor.



### **Pandora Sphinx Moth (*Eumorpha pandorus*) Caterpillar**

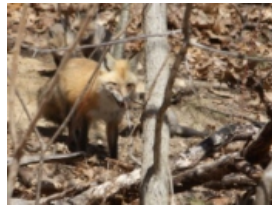
This large caterpillar (roughly 4" long) was found on the porch of Groton resident Judy Adams. Judy reports that when she went to pick it up, it pulled its head (at the right end in the photo) back into its body, creating the impression that the head was at the opposite end of the body. Curious as to its identity, Judy brought it to the NRWA River Resource Center. Staff onsite were equally mystified and took some photos to use for identification. Shortly thereafter, Judy called to report she had found her caterpillar through online research, identifying it as the larvae of the [Pandora Sphinx Moth](#). At last report, the caterpillar was feasting happily on Virginia creeper in Judy's yard, preparing for the day it will pupate in the next phase of its life to become a moth. A big thank you to Judy for bringing her "mystery caterpillar" to our office! Caterpillar photos by Pam Gilfillan; moth photo by Michael D. Cheuvront/Wikimedia Commons.



### **Red Fox Family at Applewild School in Fitchburg**

The students at Applewild School are enjoying a great view of Red Fox family activities near their school building this spring.

Thank you to Applewild School for sharing these fun photos! Photos by Applewild Upper School Head Erica Reynolds Hager.



#### Volunteers at Water Chestnut Pull on the Nashua River

Jacob, 13, from Groton and his family were amongst the volunteers who helped to pull invasive water chestnut from the Pepperell Pond impoundment of the Nashua River. Thank you to all of those who volunteered their time! [View a slideshow of the chestnut pull created by Denise Hurt.](#)

Photo by Martha Morgan.



#### Juvenile Cooper's Hawk

This juvenile Cooper's hawk was spotted in Mark's backyard in Nashua, NH.

Photo by Mark Archambault.



#### Beaver (*Castor canadensis*)

This beaver was seen swimming in the North Nashua River near the Steamline Trail in Fitchburg, MA.

Photo by Jackie Clarke.



#### **Black Bear (*Ursus americanus*)**

On the hunt for food, a black bear checks out this yard in Townsend, MA.

Photo by Carolyn Upham.



#### **Black Bear (*Ursus americanus*)**

Two black bears were spotted in this yard in Fitchburg, MA, where one was seen laying on the ground eating apples. This image was captured as the bears moved on.

Photo by Ralph Baker.



#### **Paddling the Nissitissit River**

Every spring members of the Brookline Conservation Commission and the Nissitissit River Land Trust organize a paddle on the beautiful Nissitissit River, a tributary of the Nashua River. Seen here are longtime NRWA friends Betty Hall (waving) and Nashoba Paddlers owner Diane Carson (paddling).

Photo by Buddy Doherty.



#### **Sunset on Pepperell Pond**

The Pepperell Pond impoundment above the Pepperell Dam on the Nashua River between the towns of Pepperell and Groton MA is known for great fishing, particularly for bass. This lovely sunset was captured by fisherman Jeff Cronstrom.

---

#### **Flying Squirrel**

That is not an Eastern Bluebird nesting in that bluebird box. It's a flying squirrel, the only nocturnal squirrel. Flying squirrels do not actually fly, they glide. They have a patagium (furry membrane) between their front and hind legs that is expanded for gliding. Note the large eyes for nighttime vision, and the flat tail used



for stabilizing and braking as it glides. Photo by Bill Sanderson.

---



### **Mulpus Brook**

This photo was taken by NRWA volunteer water monitor, Richard Brockelman, at his sampling site on Mulpus Brook in Lunenburg. The brook is flowing fast and high due to heavy rains.

---



### **Heron Rookery**

This Great Blue Heron rookery is in Brookline, New Hampshire. Herons nest in colonies and reuse the nests from year to year. Photo by Buddy Doherty.

---



### **Polypore**

Did you ever think fungus could be so beautiful? This fungus is a type of Polypore, a group of mushrooms that includes bracket fungi. They're generally found growing on rotting wood. This beauty, floral in its design, was spotted in the Groton Cemetery. Photo by Dorothy J. Woodle.

---



### **What do you see?**

This fun photo was taken during an NRWA Eco-Adventures program. This young man is enjoying looking at various items under a microscope. Can you tell what he was looking at? If you're not sure, look a second time at the barrel of the scope where you'll spot his escaped subject.

Photo by Nancy Ohringer.

---



Easy to identify simply by its size (18"), the Pileated Woodpecker has a bright red crest, white and black stripes on its face and neck, and black body. A special treat to see.

Photo by Leo Laverdure.

---



### Investigating Turtles

Russell Byron-Kelly stops to investigate turtles basking on a dead log while enjoying a paddle on the Dead River, just off the Nashua River in Groton.

Photo by Charlene Kelly.

---



### Can you identify the bird on the left?

Many birds thoroughly enjoy a backyard bird bath. One wonders what the Black-capped Chickadee on the right thinks of his soggy friend. The bird on the left is a juvenile Tufted Titmouse who, perhaps, got a bit carried away with his swim.

Photo by Kristopher Kvenvold.

---



### Fragrant Water-Lily (*Nymphaea odorata*)

This common white water-lily blooms from June to August on many ponds. This one was photographed on Pepperell Pond, the impoundment of the Nashua River above the Pepperell Dam. Photo by Martha Morgan.

---

## Geographic Info

view our watershed  
**SUB-BASIN PLAN**

## WHAT IS A WATERSHED?

